

LINO LIVIABELLA

TRE MOMENTI

PER VIOLA E PIANOFORTE

VIOLA

Unodivabile

Viola

Tre momenti per viola e piano

I Largo appassionato

II Allegretto timido

III Andante mistico (L'Angelus)

I
Largo appassionato $\text{♩} = 60$

(magato. noblia)

Handwritten musical score for Viola and Piano, first movement 'Largo appassionato'. The score is written on ten staves. It begins with a treble clef, a key signature of one sharp (F#), and a 3/4 time signature. The tempo is marked 'Largo appassionato' with a quarter note equal to 60 beats per minute. The score includes various dynamics such as *mf*, *p*, *molto*, *animando*, *subito calmo*, *f*, and *piu mosso*. There are also performance instructions like 'quasi cadenza (classico)' and 'a tempo'. The piece concludes with a double bar line and a fermata over the final note.

Handwritten musical score for guitar, consisting of six staves. The notation includes notes, rests, and dynamic markings. The lyrics "esta. Aguen... do" are written at the bottom of the first staff.

Staff 1: *mf* *rit...*

Staff 2: *chamamatico* *con forza* *al tempo* *espresso*

Staff 3: *rit...* *I Tempo*

Staff 4: *antiso*

Staff 5: *esta. Aguen... do*

Allegretto timido (♩ = 160)

poco rit.

a tempo

glorioso al f

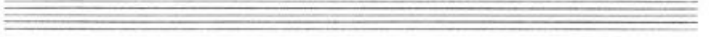
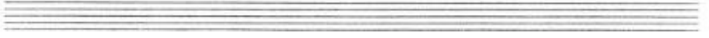
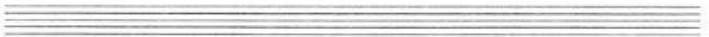
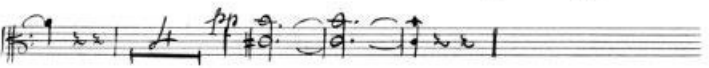
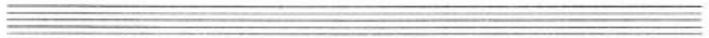
rit... a tempo

con spirito

piano

Viola

poco rit.



III
L'Angelus

(Come da loutanus)

Andante mistico

1 = 3/2

mf

f

subito

mf

f

A tempo

rit.

mf

molto cresc.

apert.

pleco tempo

con molto cresc.

f

Handwritten musical score for piano, consisting of nine staves. The notation includes various musical symbols such as clefs, time signatures, notes, rests, and dynamic markings. The score is written in a cursive, handwritten style.

Key markings and annotations include:

- sordina* (written above the second staff)
- mf* (written above the second staff)
- Meno pp* (written above the seventh staff)

The score begins with a treble clef and a key signature of one flat (B-flat). The first staff contains a melodic line with a fermata over the first measure. The second staff continues the melody and includes the *sordina* marking. The third and fourth staves feature complex chordal textures with many beamed notes. The fifth and sixth staves continue with intricate rhythmic patterns and chordal accompaniment. The seventh staff introduces the *Meno pp* marking and features a more melodic line. The eighth and ninth staves conclude the piece with simpler chordal and melodic fragments.